

Financial Disclosure(s):

The author(s) have no proprietary or commercial interest in any materials discussed in this article.

S.B.: Support – Sir Henry Dale Fellowship jointly funded by the Wellcome Trust and the Royal Society (grant no. 204623/Z/16/Z).

G.D.S.: Works within the Medical Research Council Integrative Epidemiology Unit at the University of Bristol (MC_UU_12013/1).

Author Contributions:

Conception and design: Burgess, Davey Smith

Data collection: Burgess

Analysis and interpretation: Burgess, Davey Smith

Obtained funding: Not applicable

Overall responsibility: Burgess, Davey Smith

Abbreviations and Acronyms:

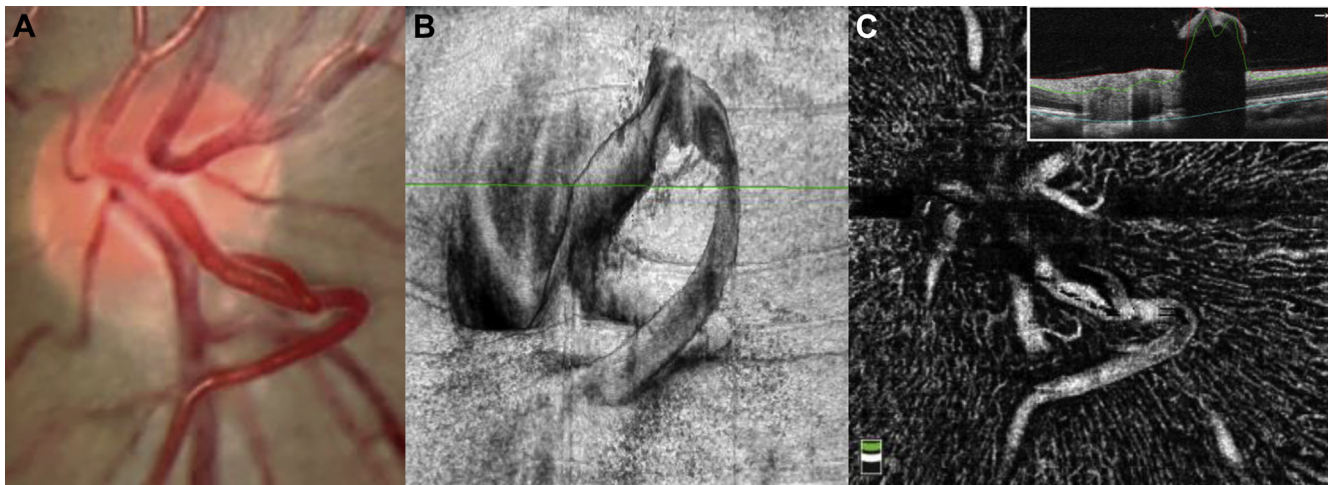
AMD = age-related macular degeneration; **CAD** = coronary artery disease; **CI** = confidence interval; **HDL** = high-density lipoprotein; **LDL** = low-density lipoprotein; **OR** = odds ratio.

Correspondence:

Stephen Burgess, MMath, PhD, Cardiovascular Epidemiology Unit, University of Cambridge, 2 Worts Causeway, Cambridge CB18RN, UK.

E-mail: sb452@medschl.cam.ac.uk.

Pictures & Perspectives



Retinal Loop Vessel Captured with Optical Coherence Tomography-Angiography

A 50-year-old woman with a history of rheumatoid arthritis and macular hydroxychloroquine toxicity presented for a routine eye examination. An incidental loop vessel of the inferior preapillary arteriole was readily apparent on examination (Fig 1A). Three-dimensional optical coherence tomography (OCT; Avanti, Optovue, Fremont, CA) demonstrated the elevation of this vessel into the vitreous (Fig 1B). The vessel was also captured on OCT-angiography (Fig 1C) with segmentation of the superficial retina and vitreous interface demonstrated by the B-scan image (inset). Retinal loop vessels are a common incidental finding on ophthalmic examination, but they can also be associated with arteriolar occlusions.

ERIC D. GAIER, MD, PhD

JOHN B. MILLER, MD

Department of Ophthalmology, Massachusetts Eye and Ear Infirmary Boston, Massachusetts
