

\*A list of authors in the Systemic Immunosuppressive Therapy for Eye Diseases Research Group appear in the [Appendix](#) (available at [www.aaojournal.org](http://www.aaojournal.org)).

**Financial Disclosure(s):**

The author(s) have made the following disclosure(s): J.E.T.: Advisory board – AbbVie; Consultant – Gilead, NightstaRx, Santen; Research to Prevent Blindness Harrington Special Scholar Award recipient.

C.S.F.: Equity owner – Eyegate; Consultant, lecturer – Allergan, Bausch & Lomb; Consultant – Sirion; Lecturer – Alcon, Inspire, Ista, Centocor.

J.H.K.: Consultant – AbbVie, Santen; Support – National Eye Institute Grant EY014943; Paul and Evanina Mackall Foundation; Research to Prevent Blindness James S. Adams Special Scholar Award recipient.

J.T.R.: Equity owner – Amgen; Consultant – Abbott, ESBATech, Lux Biosciences, Centocor, Genentech.

D.A.J. and J.T.R.: Research to Prevent Blindness Senior Scientific Investigator Award recipients during the course of the study.

G.A.L.-C. and R.B.N.: Previously supported by intramural funds of the National Eye Institute.

E.B.S.: Support from the Department of Veterans’ Affairs. None of the sponsors had any role in the design and conduct of the report; the collection, management, analysis, and interpretation of the data; or the preparation, review, and approval of this manuscript.

The project was conducted in accordance with the principles of the Declaration of Helsinki, with the approval of the governing Institutional Review Boards of each institution, each of which has granted waiver of consent, allowing all living and deceased patients to be included.

**Author Contributions:**

Conception and design: Jabs, Kempen, Daniel, Thorne, Pistilli, Rosenbaum, Suhler, Foster, Kothari, Nussenblatt

Data collection: Jabs, Kempen, Daniel, Levy-Clarke, Thorne, Pistilli, Sen, Rosenbaum, Suhler, Kacmaz, Gangaputra, Foster, Kothari, Nussenblatt

Analysis and interpretation: Jabs, Kempen, Daniel, Thorne, Pistilli, Naira, Sen, Rosenbaum, Suhler, Kacmaz, Bhatt, Gangaputra, Foster, Kothari, Nussenblatt

Obtained funding: Not applicable

Overall responsibility: Jabs, Kempen, Daniel, Levy-Clarke, Thorne, Pistilli, Naira, Sen, Rosenbaum, Suhler, Kacmaz, Bhatt, Gangaputra, Foster, Kothari, Nussenblatt

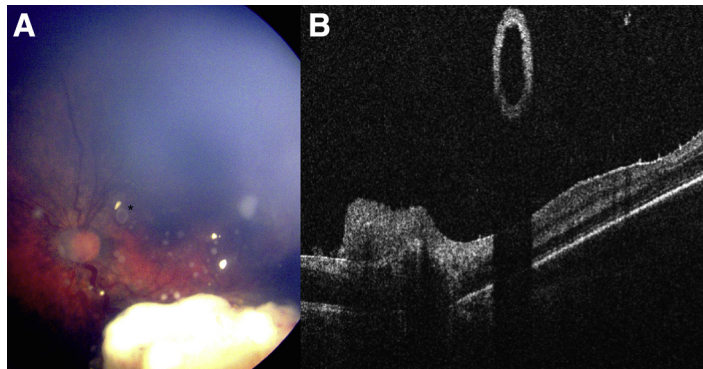
**Abbreviations and Acronyms:**

**aHR** = adjusted hazard ratio; **aOR** = adjusted odds ratio; **CI** = confidence interval; **IOP** = intraocular pressure; **OHT** = ocular hypertension; **PAS** = peripheral anterior synechiae; **SITE** = Systemic Immunosuppressive Therapy for Eye Diseases; **VA** = visual acuity.

**Correspondence:**

Ebenezer Daniel, MBBS, PhD, Ophthalmology Reading Center, Department of Ophthalmology, University of Pennsylvania, 3535 Market Street, Suite 700, Philadelphia, PA 19104. E-mail: [ebdaniel@mail.med.upenn.edu](mailto:ebdaniel@mail.med.upenn.edu).

**Pictures & Perspectives**



**Optical Coherence Tomography Imaging of a Large Spherical Seed in Retinoblastoma**

The clinical applications of handheld optical coherence tomography (OCT) imaging (Bioptigen, Morrisville, NC) for retinoblastoma continue to evolve and include characterization of small tumors, tumor recurrences, evaluation of seeding, and retinal anatomy. OCT was performed at staging examination of the left eye in a 13-month-old child diagnosed with bilateral retinoblastoma (Group C right eye, Group D left eye) demonstrated normal foveal architecture, preretinal dusting of small hyper-reflective seeds, and a hollow reflective cystic structure floating above the retina, with shadowing posteriorly, which correlated clinically with a large translucent spherical seed in the vitreous cavity (Fig 1, *asterisk*).

JESSE L. BERRY, MD<sup>1,2</sup>

KATHLEEN ANULAO, FNP<sup>1</sup>

JONATHAN W. KIM, MD<sup>1,2</sup>

<sup>1</sup>The Vision Center at Children’s Hospital Los Angeles, Los Angeles, California; <sup>2</sup>USC Roski Eye Institute, Keck Medical School of the University of Southern California, Los Angeles, California