

Financial Disclosure(s):

The author(s) have made the following disclosure(s): J.W.: Patents – WO2015020522 (owner: Leiden University Medical Center), WO2015020522

N.E.S.: Consultant – Leiden University Medical Center; Financial support – ODAS Foundation

G.D.: Consultant, Financial support, Patents – Second Sight Medical Products

C.B.H.: Consultant, Lecturer – Bayer, Novartis

A.A.B.: Financial support – Uitzicht 2009-4 van Schooneveld/Bergen

Supported by Curing Retinal Blindness Foundation; Stichting Blindenhulp; and Bayer Ophthalmology Research Awards; Janivo Stichting.

Author Contributions:

Conception and design: Talib, Bergen, Boon

Analysis and interpretation: Talib, van Schooneveld, van Genderen, Florijn, Schalij-Delfos, Dagnelie, Cremers, Wolterbeek, Fiocco, Thiadens, Klaver, Bergen, Boon

Data collection: Talib, van Schooneveld, Florijn, ten Brink, Thiadens, Hoyng, Klaver, Bergen, Boon

Obtained funding: none

Overall responsibility: Talib, van Schooneveld, van Genderen, Wijnholds, Florijn, ten Brink, Schalij-Delfos, Dagnelie, Cremers, Wolterbeek, Fiocco, Thiadens, Hoyng, Klaver, Bergen, Boon

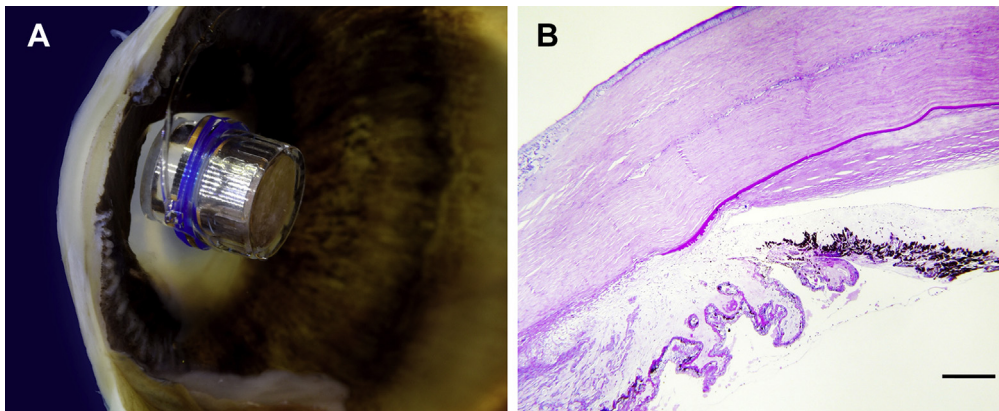
Abbreviations and Acronyms:

BCVA = best-corrected visual acuity; **CFC** = cystoid fluid collection; **CRT** = central retinal thickness; **ELM** = external limiting membrane; **EZ** = ellipsoid zone; **FAF** = fundus autofluorescence; **ffERG** = full-field electroretinography; **GI** = genetic isolate; **GVF** = Goldmann visual field; **LCA** = Leber congenital amaurosis; **logMAR** = logarithm of the minimum angle of resolution; **OCT** = optical coherence tomography; **RP** = retinitis pigmentosa; **SD** = spectral-domain; **VF** = visual field.

Correspondence:

Camiel J.F. Boon, MD, PhD, Department of Ophthalmology, Leiden University Medical Center, Postal Zone J3-S, Albinusdreef 2, 2333 ZA Leiden, The Netherlands. E-mail: c.j.f.boon@lumc.nl

Pictures & Perspectives



Fibrous Downgrowth Complicating Implantation of Intraocular Telescope

A 2.7-magnification intraocular telescope was implanted in the left eye of an 82-year-old woman with advanced age-related macular degeneration. Although the surgery was uncomplicated, she developed progressive glaucoma unresponsive to medical and surgical intervention. The eye was removed when it became blind and painful. A horizontal section through the eye showed the telescope centered in the visual axis (Fig 1A). Findings related to progressive glaucoma included a thick retrocorneal fibrous membrane and secondary closure of the angle (Fig 1B, periodic acid-Schiff stain; bar = 170 μ).

MARC H. LEVY, MD¹

CURTIS E. MARGO, MD, MPH²

¹Sarasota Retina Institute, Sarasota, Florida; ²Departments of Ophthalmology, and Pathology and Cell Biology, Morsani College of Medicine, Tampa, Florida