

## Footnotes and Financial Disclosures

Originally received: December 20, 2016.

Final revision: January 19, 2017.

Accepted: January 27, 2017.

Available online: March 13, 2017.

Manuscript no. 2016-1096.

<sup>1</sup> Ocular Oncology Service, Moorfields Eye Hospital, London, United Kingdom.

<sup>2</sup> Retinoblastoma Service, Royal London Hospital, London, United Kingdom.

<sup>3</sup> Department of Ophthalmology, University of Washington, Seattle, Washington.

<sup>4</sup> Paediatric Oncology Department, Great Ormond Street Hospital, London, United Kingdom.

<sup>5</sup> Department of Cellular Pathology, Barts Health NHS Trust, London, United Kingdom.

<sup>6</sup> National Institute for Health Research Biomedical Research Centre at Moorfields Eye Hospital NHS Foundation Trust and University College London, Institute of Ophthalmology, London, United Kingdom.

Financial disclosure(s):

The author(s) have no proprietary or commercial interest in any materials mentioned in this article.

Author Contributions:

Conception and design: Fabian, Stacey, Chowdhury, Duncan, Reddy, Sagoo

Data collection: Fabian, Stacey, Karaa, Scheimberg, Reddy, Sagoo

Analysis and interpretation: Fabian, Stacey, Chowdhury, Duncan, Karaa, Scheimberg, Reddy, Sagoo

Obtained funding: None

Overall responsibility: Fabian, Stacey, Chowdhury, Duncan, Karaa, Scheimberg, Reddy, Sagoo

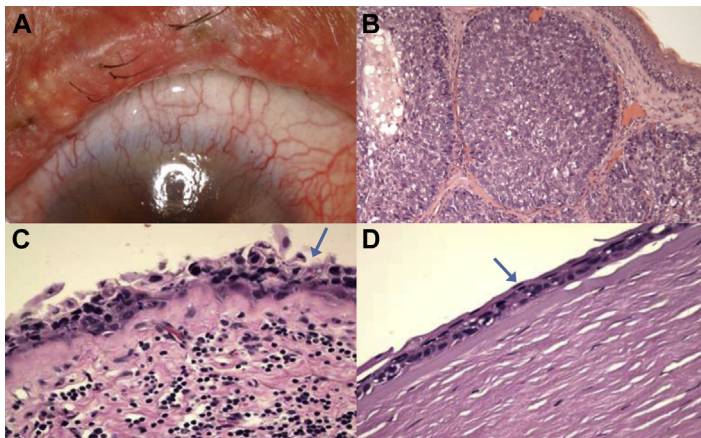
Abbreviations and Acronyms:

**EBRT** = external beam radiotherapy; **IAC** = intra-ocular artery chemotherapy; **IIRC** = International Intraocular Retinoblastoma Classification.

Correspondence:

Ido D. Fabian, MD, Moorfields Eye Hospital, 162 City Road, London EC1V 2PD, United Kingdom. E-mail: [didifabian@gmail.com](mailto:didifabian@gmail.com).

## Pictures & Perspectives



### Eyelid Sebaceous Gland Carcinoma with Extensive Pagetoid Spread

A 72-year-old woman presented with a several month history of right eye foreign body sensation and redness. Examination showed a thickened right upper eyelid with yellow discoloration, loss of normal eyelid margin architecture and madarosis, superior bulbar conjunctival erythema, and corneal pannus (Fig 1A). Eyelid incisional biopsy revealed lobules of neoplastic cells with foamy cytoplasm and central necrosis confirming sebaceous gland carcinoma (Fig 1B). Map biopsies showed pagetoid spread in the epithelium of the palpebral and bulbar conjunctiva (Fig 1C) and cornea (Fig 1D). After a systemic evaluation showed no evidence for metastases, exenteration with frozen section margin control was performed. The arrows in the figure point to pagetoid spread of tumor cells in the conjunctiva (Fig 1C) and cornea (Fig 1D) epithelium as noted in the text.

ARPINE BARSEGHIAN, MD

ROMAN SHINDER, MD, FACS

Ophthalmology, SUNY Downstate Medical Center, Brooklyn, New York