

39. Qin B, Tang M, Li Y, et al. Anterior segment dimensions in Asian and Caucasian eyes measured by optical coherence tomography. *Ophthalmic Surg Lasers Imaging*. 2012;432:135-142.
40. Leite MT, Alencar LM, Gore C, et al. Comparison of corneal biomechanical properties between healthy blacks and whites

using the Ocular Response Analyzer. *Am J Ophthalmol*. 2010;150:163-168.e1.

41. Azar DT, Chang JH, Han KY. Wound healing after keratorefractive surgery: review of biological and optical considerations. *Cornea*. 2012;31(Suppl 1):S9-S19.

Footnotes and Financial Disclosures

Originally received: November 10, 2016.

Final revision: January 30, 2017.

Accepted: January 30, 2017.

Available online: March 18, 2017.

Manuscript no. 2016-744.

¹ Singapore Eye Research Institute, Singapore, Republic of Singapore.

² Singapore National Eye Center, Singapore, Republic of Singapore.

³ Department of Clinical Sciences, Duke-NUS Graduate Medical School, Singapore, Republic of Singapore.

⁴ School of Material Science & Engineering and School of Mechanical and Aerospace Engineering, Nanyang Technological University, Singapore, Republic of Singapore.

Financial Disclosure(s):

The author(s) have no proprietary or commercial interest in any materials discussed in this article.

Supported by the Singapore National Research Foundation under its Translational and Clinical Research Programme (NMRC/TCR/1021-SERI/2013) and administered by the Singapore Ministry of Health's National Medical Research Council.

Author Contributions:

Conception and design: Liu, Mehta

Analysis and interpretation: Liu

Data collection: Rosman, Mehta

Obtained funding: none

Overall responsibility: Liu, Rosman, Mehta

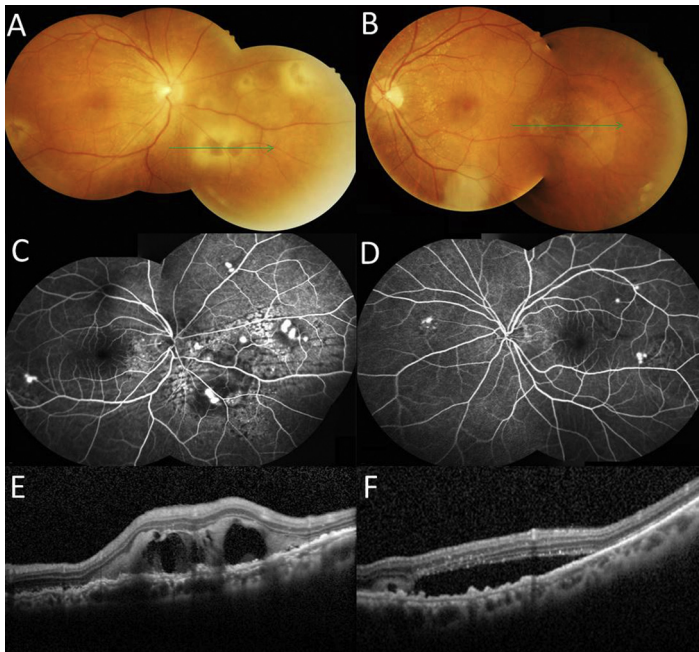
Abbreviations and Acronyms:

CI = confidence interval; **D** = diopter; **MMC** = mitomycin C; **MRSE** = manifest refraction spherical equivalent; **OR** = odds ratio; **PRK** = photorefractive keratectomy; **SE** = spherical equivalent; **SMILE** = small-incision lenticule extraction.

Correspondence:

Jodhbir S. Mehta, MBBS, FRCS, Singapore National Eye Center, 11 Third Hospital Avenue, Singapore 168751, Republic of Singapore. E-mail: jodhmehta@gmail.com.

Pictures & Perspectives



Central Serous Chorioretinopathy in a Patient with Ectopic Adrenocorticotropic Hormone-secreting Tumor

A 58-year-old man complained of blurred vision in both eyes for 2 weeks. His vision was 20/50 in both eyes. Examination revealed yellow-whitish subretinal fibrin with fluid in both eyes (Fig 1A, B; green arrows are linear cuts of lesions). Optical coherence tomography images demonstrate the structures of linear cuts. Fluorescein angiography showed multiple points of leakage in retinal pigment epithelium (Fig 1C, D). Spectral-domain optical coherence tomography demonstrated elevated retina with hyperreflective and hyporefective contents in the subretinal space (Fig 1E, F). After systemic survey, ectopic pancreatic adrenocorticotropic hormone-secreting tumor was identified. Two months after laparoscopic surgery, the subretinal fibrin and fluid completely regressed. His final vision was 20/20 in both eyes.

KUAN-JEN CHEN, MD

NAN-KAI WANG, MD, PhD

JEN-HSIANG SHEN, MD

Department of Ophthalmology, Chang Gung Memorial Hospital, Chang Gung University, College of Medicine, Tayouan, Taiwan