

Bayer; Lecturer – Allergan, Novartis, Bayer, Heidelberg Engineering, Topcon, Haag-Streit

Supported in part by the Department of Health's NIHR Biomedical Research Centre for Ophthalmology at Moorfields Eye Hospital and UCL Institute of Ophthalmology, London, United Kingdom. The views expressed in the publication are those of the authors and not necessarily those of the Department of Health.

Author Contributions:

Conception and design: Timlin, Keane, Rose, Ezra

Analysis and interpretation: Timlin, Keane, Rose, Ezra

Data collection: Timlin

Obtained funding: none

Overall responsibility: Timlin

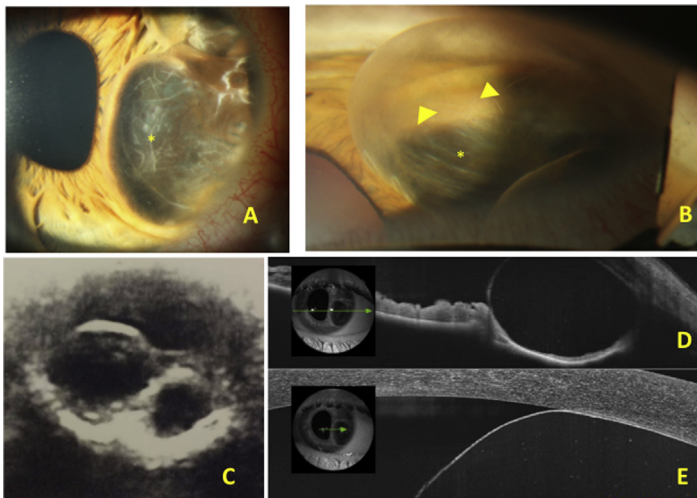
Abbreviations/Acronyms:

OCT = optical coherence tomography; **SD** = standard deviation.

Correspondence:

Daniel G. Ezra, MD, FRCOphth, Adnexal Office, Moorfields Eye Hospital, London EC1V 2PD, United Kingdom. E-mail: d.ezra@ucl.ac.uk.

Pictures & Perspectives



Bilobed Iris Stromal Epithelial Cyst

A 30-year-old man presented with a gradually enlarging bilobed iris lesion in the left eye over a period of 3 months (Fig 1A). Gonioscopic photograph (Fig 1B) indicates a translucent lesion with a thin anterior wall and displacement of the iris stroma (*arrowheads*). Iris pigment epithelial layer depicted on the floor of the cyst (Fig 1B, *asterisk*). The B scan ultrasound indicated the presence of 2 lobes in the cyst (Fig 1C). Swept-source anterior-segment optical coherence tomography (Fig 1D–E) demonstrating posterior bowing of the pigment epithelium, iridocorneal touch, and fluid in the cyst containing reflective particles (Fig 1E; inset, location of section).

VASILIOS P. PAPANSTEFANOU, MD, PhD

VICTORIA M.L. COHEN, MB B CHIR, FRCOPHTH

Ocular Oncology Service, Moorfields Eye Hospital, London, United Kingdom