

62. Couch SM, Brodie SE, Leavitt JA, Brodsky MC. Something to sink your teeth into. *Surv Ophthalmol.* 2011;56:544-549.
63. Papanagnu E, Klaehn LD, Bang GM, et al. Congenital ocular motor apraxia with wheel-rolling ocular torsion: a neurodiagnostic phenotype of Joubert syndrome. *J AAPOS.* 2014;18:404-407.
64. Merlini L, Vargas ML, De Haller R, et al. MRI with fiber tracking in Cogan congenital ocular motor apraxia. *Pediatr Radiol.* 2010;40:1625-1633.
65. Charcot JM. De L'Expectation en Me'decine. 1857. In: Mencken HL, ed. *Quoted in: A New Dictionary of Quotations.* New York: Alfred A. Knopf; 1962.

## Footnotes and Financial Disclosures

Originally received: November 14, 2016.

Final revision: January 24, 2017.

Accepted: January 26, 2017.

Available online: April 3, 2017.

Manuscript no. 2016-819.

Departments of Ophthalmology and Neurology, Mayo Clinic, Rochester, Minnesota.

Presented at: the American Academy of Ophthalmology, October 16, 2016, Chicago, Illinois.

Financial Disclosure(s):

The author(s) have no proprietary or commercial interest in any materials discussed in this article.

Supported in part by an endowment from the Knights Templar Eye Foundation, an unrestricted grant from Research to Prevent Blindness (New York, NY), and the Mayo Foundation (Rochester, MN). The

funding organization had no role in the design or conduct of this research.

Author Contributions:

Conception and design: Brodsky

Data collection: Brodsky

Analysis and interpretation: Brodsky

Obtained funding: Not applicable

Overall responsibility: Brodsky

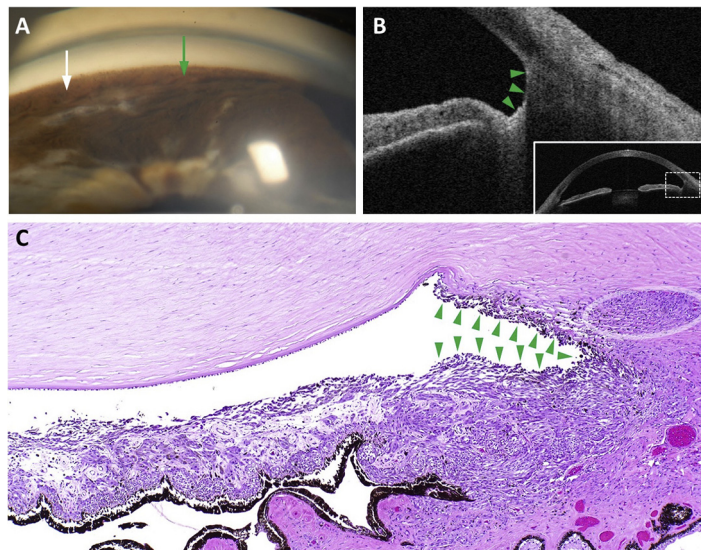
Abbreviations and Acronyms:

**EOM** = extraocular muscle; **MR** = magnetic resonance.

Correspondence:

Michael C. Brodsky, MD, Department of Ophthalmology, Mayo Clinic, 200 First Street SW, Rochester, MN 55905. E-mail: [brodsky.michael@mayo.edu](mailto:brodsky.michael@mayo.edu).

## Pictures & Perspectives



### Anterior Chamber Angle Invasion of Iridociliary Melanoma

A 70-year-old woman was evaluated before enucleation for a large iridociliary melanoma. On gonioscopy (Fig 1A), it was difficult to differentiate pigment occluding the angle (*white arrow*) versus tumor mass invading the angle (*green arrow*). By anterior-segment optical coherence tomography (AS-OCT; Fig 1B), the iridocorneal angle was preserved temporally but effaced nasally (inset, *dashed box*) by a lesion with medium-to-high reflectivity (*green arrowheads*). Histopathology (Fig 1C) confirmed the presence of tumor cells invading the anterior chamber angle nasally (*green arrowheads*) and tracking into Schlemm's canal (semitransparent oval). AS-OCT correlates well with histopathology and may enhance detection of microscopic anterior chamber angle invasion.

SCOTT D. WALTER, MD, MSc<sup>1</sup>

THOMAS J. CUMMINGS, MD<sup>1,2</sup>

PRITHVI MRUTHYUNJAYA, MD<sup>1</sup>

<sup>1</sup>Department of Ophthalmology, Duke University, Durham, North Carolina; <sup>2</sup>Department of Pathology, Duke University, Durham, North Carolina