

⁴ Department of Ophthalmology and Visual Sciences, Vanderbilt University, Nashville, Tennessee.

⁵ Center for Eye Policy & Innovation, University of Michigan, Ann Arbor, Michigan.

⁶ Department of Health Management and Policy, University of Michigan School of Public Health, Ann Arbor, Michigan.

Financial Disclosure(s):

The author(s) have made the following disclosure(s): M.A.W.: Consultant – Intelligent Retinal Imaging Systems

Supported by the Michigan Institute for Clinical and Health Research, Ann Arbor, MI; Research to Prevent Blindness, Inc, New York, New York (Physician Scientist award [J.D.S.]); the W.K. Kellogg Foundation, Battle Creek, MI; the National Eye Institute, National Institutes of Health, Bethesda, Maryland (K23 Mentored Clinical Scientist Award no.: K23EY023596-01 [M.A.W.]); and National Clinician Scholars Program (B.C.S.), Ann Arbor, MI.

Author Contributions:

Conception and design: Stagg, Shah, Talwar, Padovani-Claudio, Woodward, Stein

Analysis and interpretation: Stagg, Shah, Talwar, Padovani-Claudio, Woodward, Stein

Data collection: Stein

Obtained funding: none

Overall responsibility: Stagg, Shah, Talwar, Padovani-Claudio, Woodward, Stein

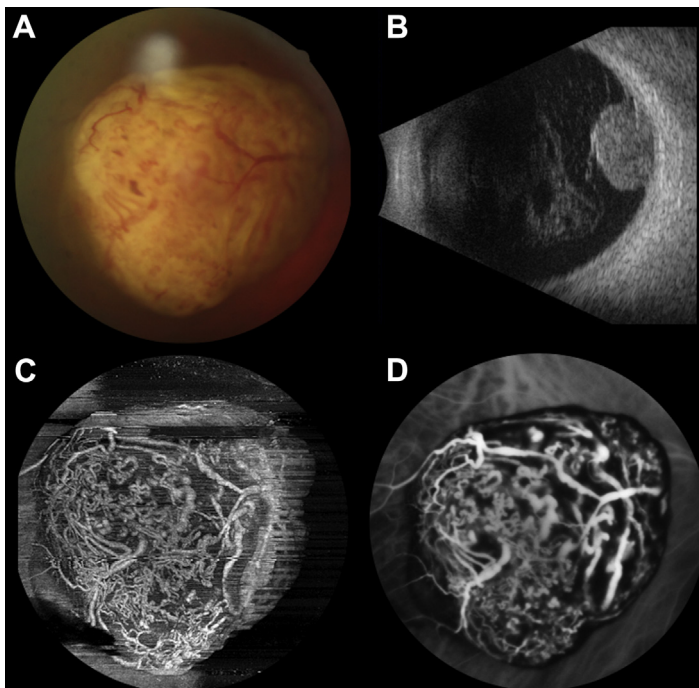
Abbreviations and Acronyms:

CI = confidence interval; **ED** = emergency department; **HR** = hazard ratio; **HRR** = hospital referral region; **ICD-9-CM** = International Classification of Diseases, Ninth Revision, Clinical Modification; **SD** = standard deviation.

Correspondence:

Joshua D. Stein, MD, MS, Department of Ophthalmology and Visual Sciences, University of Michigan, 1000 Wall Street, Ann Arbor, MI 48105. E-mail: jdstein@med.umich.edu.

Pictures & Perspectives



Swept-source Optical Coherence Tomography Angiography Imaging in a Case of Uveal Melanoma

A 52-year-old man was referred to our ocular oncology department for evaluating a uveal mass in his right eye. Fundus examination revealed an amelanotic, mushroom-shaped choroidal melanoma in the nasal periphery (Fig 1A) measuring 8 mm in diameter and 5.9 mm in thickness at B-scan ultrasonography (Fig 1B). Swept-source optical coherence tomography angiography (Fig 1C) (Zeiss PLEX Elite 9000) allowed a comprehensive study of the mass despite its unfavorable position and thickness with excellent visualization of its intrinsic vasculature and details comparable to indocyanine green angiography (Fig 1D). Seven months after stereotactic radiosurgery the patient is being closely monitored with no evidence of systemic disease.

MARCO PELLEGRINI, MD

GIOVANNI STAURENGHI, MD, FARVO

Eye Clinic, Department of Biomedical and Clinical Sciences "Luigi Sacco," Luigi Sacco Hospital, University of Milan, Italy

Footnotes and Financial Disclosures

Financial Disclosures:

The author(s) have made the following disclosure(s):

M.P.: Grants and personal fees – Optovue Inc.

G.S.: Grants and personal fees – Optovue Inc, Heidelberg Engineering, Zeiss Meditec Inc, Nidek, Centervue.