

Footnotes and Financial Disclosures

Originally received: July 26, 2016.

Final revision: January 3, 2017.

Accepted: January 3, 2017.

Available online: February 22, 2017. Manuscript no. 2016-1558.

¹ State Key Laboratory of Ophthalmology, Zhongshan Ophthalmic Center, Sun Yat-sen University, Guangzhou, China.

² Department of Radiology, The Affiliated Brain Hospital of Guangzhou Medical University (Guangzhou Huiai Hospital), Guangzhou, China.

³ Research School of Biology, Australian National University, Canberra, ACT, Australia.

⁴ Centre for Eye Research Australia, University of Melbourne, Royal Victorian Eye and Ear Hospital, East Melbourne, Australia.

*Xinxing Guo and Ou Xiao made equal contributions to this study.

Financial Disclosure(s):

The author(s) have no proprietary or commercial interest in any materials discussed in this article.

Supported by the Fundamental Research Funds of the State Key Laboratory, National Natural Science Foundation of China (81420108008 and 81271037), Science and Technology Planning Project of Guangdong

Province (2013B204000003), and a grant from the Brien Holden Vision Institute.

Author Contributions:

Conception and design: Guo, Chen, Chen, Morgan, He

Data collection: Xiao, Chen, Wu, Chen

Analysis and interpretation: Guo, Xiao, Chen, Morgan, He

Obtained funding: Not applicable

Overall responsibility: Guo, Xiao, Morgan, He

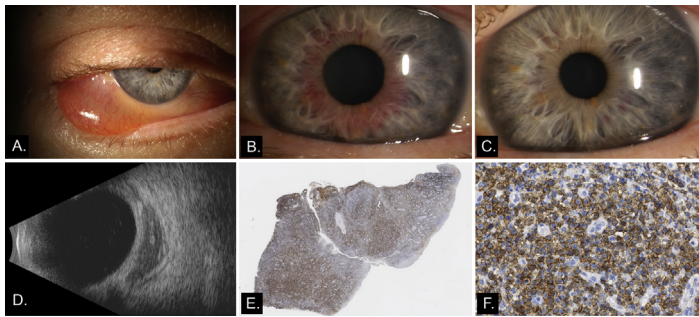
Abbreviations and Acronyms:

AL = axial length; **BCVA** = best-corrected visual acuity; **D** = diopters; **MRI** = magnetic resonance imaging; **OR** = odds ratio; **SER** = spherical equivalent refraction; **3D** = 3-dimensional; **ZOC-BHVI** = Zhongshan Ophthalmic Center—Brien Holden Vision Institute.

Correspondence:

Mingguang He, MD, PhD, Department of Preventive Ophthalmology, Zhongshan Ophthalmic Center, Sun Yat-sen University, Guangzhou 510060, People's Republic of China. E-mail: mingguang_he@yahoo.com.

Pictures & Perspectives



Orbital and Intraocular Lymphoma in Contralateral Eyes: A Case of Cutaneous Aggressive CD-8+ T-Cell Lymphoma

A 63-year-old man presented with right eye swelling 3 months after onset of an ulcerative sacral lesion. Examination of the right eye revealed ptosis, chemosis, proptosis, dysmotility, and a retrobulbar mass on ultrasound (Fig 1A, D). The left eye showed an iris lesion along the pupillary margin (Fig 1B), endothelial keratic precipitates, and anterior chamber cell. Positron emission tomography showed hypermetabolic activity involving sacrum, kidneys, liver, maxillary sinus, hard palate, and right orbit. Biopsy and immunohistochemistry with anti-CD8 antibodies of sacral and oral lesions demonstrated a cutaneous aggressive CD8+ T-cell lymphoma (Fig 1E, 1.25× magnification; Fig 1F, 40× magnification). The patient's ocular signs resolved with chemotherapy (Fig 1C); his treatment is ongoing.

CHRISTOPHER KOMANSKI, MD, MSE

KENNETH WEINLANDER, MD

PATRICK YEATTS, MD

Department of Ophthalmology, Wake Forest Baptist Health, Winston-Salem, North Carolina