

26. Alvarez CA, Lingvay I, Vuylsteke V, et al. Cardiovascular risk in diabetes mellitus: complication of the disease or of anti-hyperglycemic medications. *Clin Pharmacol Ther.* 2015;98:145-161.
27. Contreras I, Rebolledo G, Noval S, Muñoz-Negrete FJ. Optic disc evaluation by optical coherence tomography in nonarteritic anterior ischemic optic neuropathy. *Invest Ophthalmol Vis Sci.* 2007;48:4087-4092.
28. Dotan G, Goldstein M, Kesler A, Skarf B. Long-term retinal nerve fiber layer changes following nonarteritic anterior ischemic optic neuropathy. *Clin Ophthalmol.* 2013;7:735-740.

## Footnotes and Financial Disclosures

Originally received: October 1, 2016.

Final revision: November 6, 2016.

Accepted: November 21, 2016.

Available online: December 22, 2016. Manuscript no. 2016-470.

<sup>1</sup> Department of Ophthalmology, John Hopkins University School of Medicine, Baltimore, Maryland.

<sup>2</sup> Johns Hopkins Biostatistics Center, Department of Biostatistics, Johns Hopkins Bloomberg School of Public Health, Baltimore, Maryland.

<sup>3</sup> Department of Neurology, John Hopkins University School of Medicine, Baltimore, Maryland.

<sup>4</sup> Department of Neurosurgery, John Hopkins University School of Medicine, Baltimore, Maryland.

Financial Disclosure(s):

The author(s) have no proprietary or commercial interest in any materials discussed in this article.

Supported by the Wilmer Biostatistics Core Grant EY01765 and an unrestricted grant from Research to Prevent Blindness, Inc, to the Wilmer Eye Institute.

Author Contributions:

Data collection: Conception and design: Sharma, Wang, Subramanian

Data collection: Sharma, Kwan, Fallano, Subramanian

Analysis and interpretation: Sharma, Wang, Miller, Subramanian

Obtained funding: Not applicable

Overall responsibility: Sharma, Kwan, Fallano, Wang, Miller, Subramanian

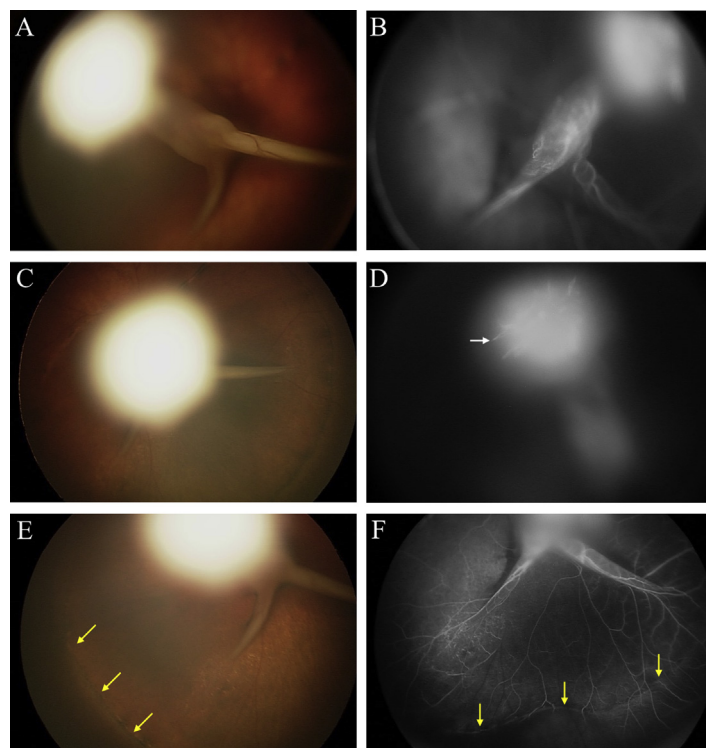
Abbreviations and Acronyms:

**C/D** = cup-to-disc; **CI** = confidence interval; **logMAR** = logarithm of the minimum angle of resolution; **NAION** = nonarteritic anterior ischemic optic neuropathy; **OR** = odds ratio.

Correspondence:

Prem S. Subramanian, MD, PhD, Department of Ophthalmology, University of Colorado School of Medicine, 1675 Aurora Ct, Mail Stop F731, Aurora, CO 80045. E-mail: [prem.subramanian@ucdenver.edu](mailto:prem.subramanian@ucdenver.edu).

## Pictures & Perspectives



### Fluorescein Angiography in Persistent Fetal Vasculature

A 6-month-old boy presented with leucocoria and large angle exotropia of the right eye. Axial length was 19.95 mm. Funduscopy revealed a fibrovascular stalk extending from the optic nerve, inserting as a white mass on the posterior lens capsule (Fig 1A, C). The optic nerve was not visible beneath the stalk and there were posterior retinal folds adjacent to the stalk. Fluorescein angiography (RetCam, Clarity Medical, Pleasanton, CA) demonstrated retinal vessels in posterior retinal folds pulled anteriorly into the stalk up to the posterior lens (Fig 1B, D, white arrow) and peripheral retinal capillary nonperfusion (Fig 1F, yellow arrows). These findings confirm the diagnosis of persistent fetal vasculature.

KAREN W. JENG-MILLER, MD, MPH<sup>1</sup>

ANTHONY JOSEPH, MD<sup>2</sup>

CAROLINE R. BAUMAL, MD<sup>2</sup>

<sup>1</sup>Massachusetts Eye and Ear Infirmary, Harvard Medical School, Boston, Massachusetts; <sup>2</sup>New England Eye Center, Tufts Medical Center, Boston, Massachusetts

### Footnotes and Financial Disclosures

The authors have made the following disclosure(s): C.R.B.: Speaker and Advisory Board — Genentech.