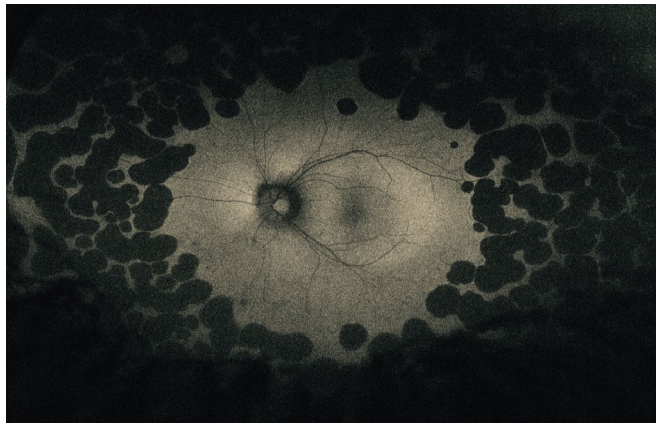


Widefield Fundus Autofluorescence in Gyrate Atrophy

A 16-year-old myopic girl presented with a complaint of diminished vision, especially at night. Current spectacle visual acuity (VA) was 20/60 in the right eye (OD) and 20/50 in the left eye (OS). Lensometry showed -8.25 OD and -8.75 OS. Refraction improved VA to 20/25 in both eyes with correction of -9.00 OD and -9.50 OS. Fundus exam showed well-demarcated, scalloped areas of outer retinal and inner choroidal atrophy in the retinal periphery that were hypoautofluorescent. Ornithine plasma levels were more than 10 times above the normal range (hyperornithinemia). A diagnosis of gyrate atrophy due to a deficiency of ornithine aminotransferase was made, and she was placed on a low arginine diet.



WRITTEN BY MIGUEL PACIUC-BEJA, MD, AND HUGO QUIROZ-MERCADO, MD. PHOTO BY REGINA VICTORIA, DENVER HEALTH MEDICAL CENTER, UNIVERSITY OF COLORADO SCHOOL OF MEDICINE, AURORA.