

Supported by the National Eye Institute, National Institutes of Health, Department of Health and Human Services; Grant numbers 1U10EY023558-01A1 (J.G.), 1U10EY024247-01 (W.J.F.), and P30EY014801 (V.P.).

W.J.F.: Grants — Research to Prevent Blindness and the Department of Defense (DOD); Unrestricted grant — Research to Prevent Blindness and DOD grant no. W81XWH-09-1-0675.

Author Contributions:

Conception and design: Davis, Gonzalez, Koilkonda, Guy, Yuan

Analysis and interpretation: Feuer, Schiffman, Davis, Porciatti, Koilkonda, Yuan

Data collection: Davis, Guy, Gonzalez, Koilkonda, Lam, Yuan

Obtained funding: Guy

Overall responsibility: Feuer, Schiffman

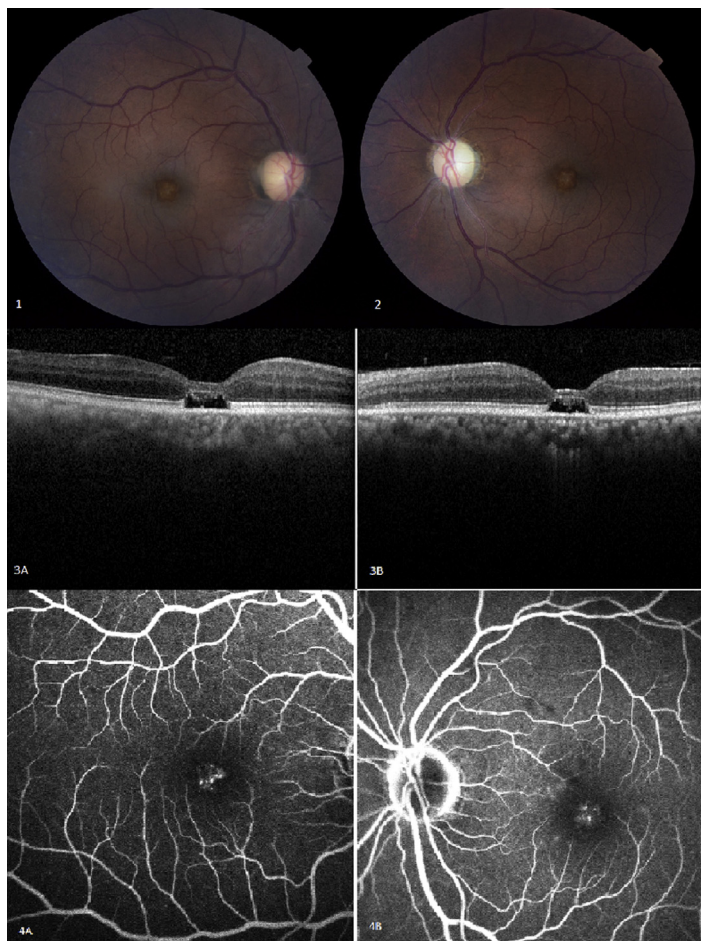
Abbreviations and Acronyms:

**AAV** = adeno-associated virus vector; **ACF** = anterior chamber fluid; **DMEM** = Dulbecco's modified Eagle's medium; **ETDRS** = Early Treatment Diabetic Retinopathy Study; **IOP** = intraocular pressure; **LHON** = Leber hereditary optic neuropathy; **mtDNA** = mitochondrial DNA; **NAb** = neutralizing antibody; **PCR** = polymerase chain reaction; **PERG** = pattern electroretinogram; **RNFL** = retinal nerve fiber layer; **scAAV** = self-complementary adeno-associated vector.

Correspondence:

John Guy, MD, Bascom Palmer Eye Institute, 1638 NW 10th Avenue, Room 404, Miami, FL 33136. E-mail: [JGuy@med.miami.edu](mailto:JGuy@med.miami.edu).

## Pictures & Perspectives



### Solar Retinopathy

A 60-year-old man with a history of schizoaffective disorder, diabetes, and hypertension presented for central floaters and blurred vision in both eyes (OU). He had a longstanding history of antipsychotic drug use and staring at the sun. Best corrected visual acuity was 20/30 in the right eye (OD) and 20/40 in the left eye (OS). Ophthalmoscopy demonstrated areas of yellow, central macular reflex in each eye (Figs 1 and 2). Optical coherence tomography evinced areas of atrophy in the retinal pigment epithelium, photoreceptors, and outer retinal segments in the fovea OU (Fig 3A–B). Fluorescein angiography showed staining corresponding to retinal pigment epithelial atrophy with no leakage confirming the diagnosis of solar retinopathy (Fig 4A–B).

ORRY BIRDSONG, MD

JOHN LING, MD

JAAFAR EL-ANNAN, MD

Department of Ophthalmology, The University of Texas Medical Branch, Galveston, Texas