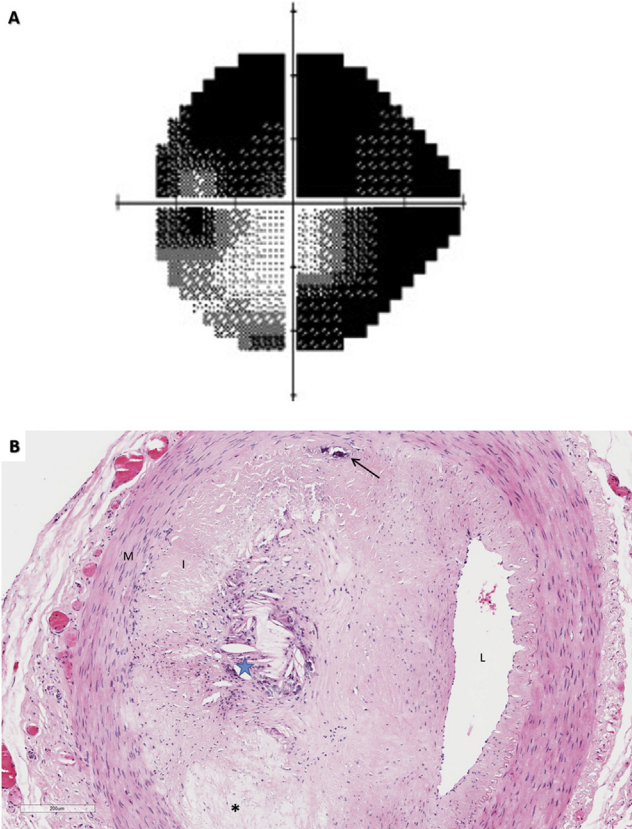


Supported in part from the National Institutes of Health Center Core Grant P30EY014801 (Bethesda, MD), Research to Prevent Blindness Unrestricted Grant (New York, NY), and the Department of Defense grant no. W81XWH-09-1-0675 (Washington, DC).

Correspondence:

Harry W. Flynn, Jr., MD, Department of Ophthalmology, Bascom Palmer Eye Institute, University of Miami, Miller School of Medicine, 900 N.W. 17th Street, Miami, FL 33136. E-mail: hflynn@med.miami.edu.

Pictures & Perspectives



Nonarteritic Anterior Ischemic Optic Neuropathy (NAION) in Polymyalgia Rheumatica

A 73-year-old man with a history of polymyalgia rheumatica, diabetes mellitus II, and significant cardiovascular disease presented with left optic disc edema. Automated visual field testing showed dense superior and partial inferior visual field defects of the left eye (Fig 1A). Histopathology (H&E) of his temporal artery biopsy revealed focal calcification (Fig 1B, *arrow*) in the media (M), consistent with Monckeberg's arteriosclerosis. Although narrowed by a thickened atheroma composed of foamy macrophages (*asterisk*), and cholesterol clefts (*star*) in the intima (I), the lumen (L) remained patent. Polymyalgia rheumatica is associated with accelerated atherosclerosis in the coronary, cerebral, and peripheral arteries.

MARIA E. RODRIGUEZ, MD

CHRISTOPHER K. BURRIS, MD

HEATHER D. POTTER, MD

Department of Ophthalmology and Visual Sciences, University of Wisconsin – Madison, Madison, Wisconsin