

Author Contributions:

Conception and design: Skaat, De Moraes, Bowd, Sample, Girkin, Medeiros, Ritch, Weinreb, Zangwill, Liebmann

Data collection: Skaat, De Moraes, Bowd, Sample, Girkin, Medeiros, Ritch, Weinreb, Zangwill, Liebmann

Analysis and interpretation: Skaat, De Moraes, Weinreb, Zangwill, Liebmann

Obtained funding: Not applicable

Overall responsibility: Skaat, De Moraes, Bowd, Sample, Girkin, Medeiros, Ritch, Weinreb, Zangwill, Liebmann

Abbreviations and Acronyms:

**AD** = African descent; **ADAGES** = African Descent and Glaucoma Evaluation Study; **βPPA** = beta-zone parapapillary atrophy;

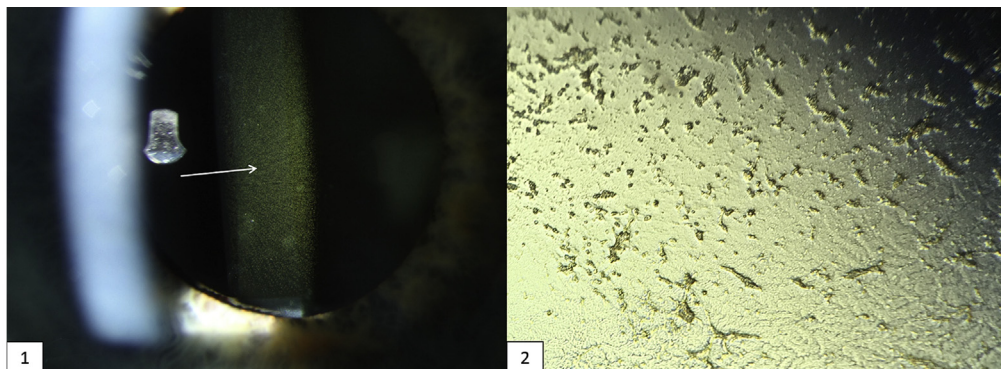
**CCT** = central corneal thickness; **CI** = confidence interval; **dB** = decibels; **DH** = disc hemorrhage; **DIGS** = Diagnostic Innovations in Glaucoma Study; **ED** = European descent; **GON** = glaucomatous optic neuropathy; **IDEA** = Imaging Data Evaluation and Analysis; **MD** = mean deviation; **OCT** = optical coherence tomography; **OR** = odds ratio; **UCSD** = University of California-San Diego; **VF** = visual field.

Correspondence:

Carlos Gustavo De Moraes, MD, MPH, Harkness Eye Institute, 635 West 165th Street, Box 69, New York, NY 10032. E-mail: [gustavo.demoraes@columbia.edu](mailto:gustavo.demoraes@columbia.edu).

## Pictures & Perspectives

---



### Glistening Intraocular Lens

A 63-year-old man developed hazy and “glistening” vision 1 year after uneventful cataract extraction with placement of an acrylic posterior chamber intraocular lens (IOL) (AcrySof, Alcon Laboratories, Inc, Fort Worth, TX). Slit lamp examination revealed diffuse cysts in all layers of the optic (Fig 1). Due to intractable symptoms in bright lights and when driving at night, the patient required IOL exchange. Microscopically, fluid-filled opacities were seen (Fig 2). Though glistenings have been described in all IOL materials, acrylic material appears to be more prone to visually significant glistenings.

MEISHA L. RAVEN, DO  
CHRIS K.H. BURRIS, MD  
SARAH M. NEHLS, MD

*University of Wisconsin – Madison, Department of Ophthalmology, Madison, Wisconsin*

---