

Footnotes and Financial Disclosures

Originally received: April 11, 2016.

Final revision: April 27, 2016.

Accepted: April 27, 2016.

Available online: June 1, 2016.

Manuscript no. 2016-739.

¹ Singapore National Eye Centre, Singapore, Republic of Singapore.

² Singapore Eye Research Institute, Singapore, Republic of Singapore.

³ Department of Ophthalmology and Visual Sciences, Duke-NUS Medical School, Singapore, Republic of Singapore.

⁴ Department of Ophthalmology, National University Health System, Singapore, Republic of Singapore.

Financial Disclosure(s):

The author(s) have made the following disclosure(s): J.S.M.: Patent – Endoglide (North Yorkshire, UK) (royalties to Network Medical)

D.T.: Patent – Endoglide (royalties to Network Medical)

Supported by the National Research Foundation-Funded Translational & Clinical Research Programme (grant no.: NMRC/TCR/002-SERI/2008-TCR 621/41/2008), Singapore, Singapore.

Author Contributions:

Conception and design: Ang, Mehta, Tan

Analysis and interpretation: Ang, Soh, Htoon, Mehta, Tan

Data collection: Ang, Soh, Htoon, Mehta, Tan

Obtained funding: Mehta, Tan

Overall responsibility: Ang, Soh, Htoon, Mehta, Tan

Abbreviations and Acronyms:

BK = bullous keratopathy; **CI** = confidence interval;

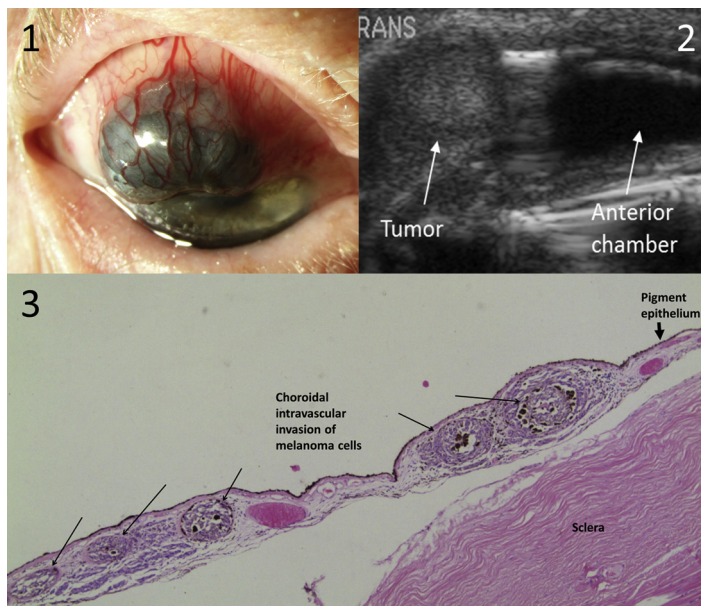
CMV = cytomegalovirus; **DSAEK** = Descemet stripping automated endothelial keratoplasty; **ECD** = endothelial cell density; **EK** = endothelial keratoplasty; **FED** = Fuchs' endothelial dystrophy; **HR** = hazard ratio;

PK = penetrating keratoplasty.

Correspondence:

Donald Tan and Jodhbir S. Mehta, Singapore National Eye Centre, 11 Third Hospital Avenue, Singapore 168751, Republic of Singapore. E-mail: donald.tan.t.h@singhealth.com.sg; jodhmehta@gmail.com.

Pictures & Perspectives



Extremely Invasive Conjunctival Melanoma

A 75-year-old white man presented with recurrence of right conjunctival melanoma, for which he had previously had an excisional biopsy, scleral lamella dissection, and cryotherapy. Visual acuity was 20/200 in the affected eye, which showed a large pigmented mass at the superior limbus (Fig 1), and ultrasonographic evidence of anterior chamber invasion (Fig 2). The patient underwent exenteration and histopathology disclosed extensive infiltration of the melanoma in the iris, ciliary body, and choroid. Within the choroid, its distribution was strikingly intravascular (Fig 3). The lamella scleral dissection of the original tumor may have contributed to its intraocular extension.

IDO D. FABIAN, MD^{1,2}

CAROLINE THAUNG, FRCOPHTH, FRCPATH^{1,3}

VICTORIA M.L. COHEN, MB BCHIR, FRCOPHTH^{1,2}

¹Moorfields Eye Hospital, London, England; ²Ocular Oncology Service, St Bartholomew's Hospital, London, England; ³UCL Institute of Ophthalmology, London, England