

Financial Disclosure(s):

The author(s) have made the following disclosure(s): C.G.D.: Consultant – Sensimed AG, Lausanne, Switzerland

S.S.: Employee – Sensimed AG, Lausanne, Switzerland

J.M.L.: Consultant – Sensimed AG, Lausanne, Switzerland

R.R.: Consultant – Sensimed AG, Lausanne, Switzerland

Sponsored by Sensimed AG, Lausanne, Switzerland; and supported by the James Cox Chambers Fund of the New York Glaucoma Research Institute, New York, New York (J.V.J.). Unrestricted grant from Research to Prevent Blindness, New York, NY; Shirlee and Bernard Brown Research Laboratory of the Department of Ophthalmology at Columbia University Medical Center (C.G.D. and J.M.L.)

Author Contributions:

Conception and design: De Moraes, Liebmann, Ritch

Analysis and interpretation: De Moraes, Simon-Zoula, Liebmann, Ritch

Data collection: De Moraes, Jasien, Simon-Zoula, Liebmann, Ritch

Obtained funding: Liebmann, Ritch

Overall responsibility: De Moraes, Simon-Zoula, Liebmann, Ritch

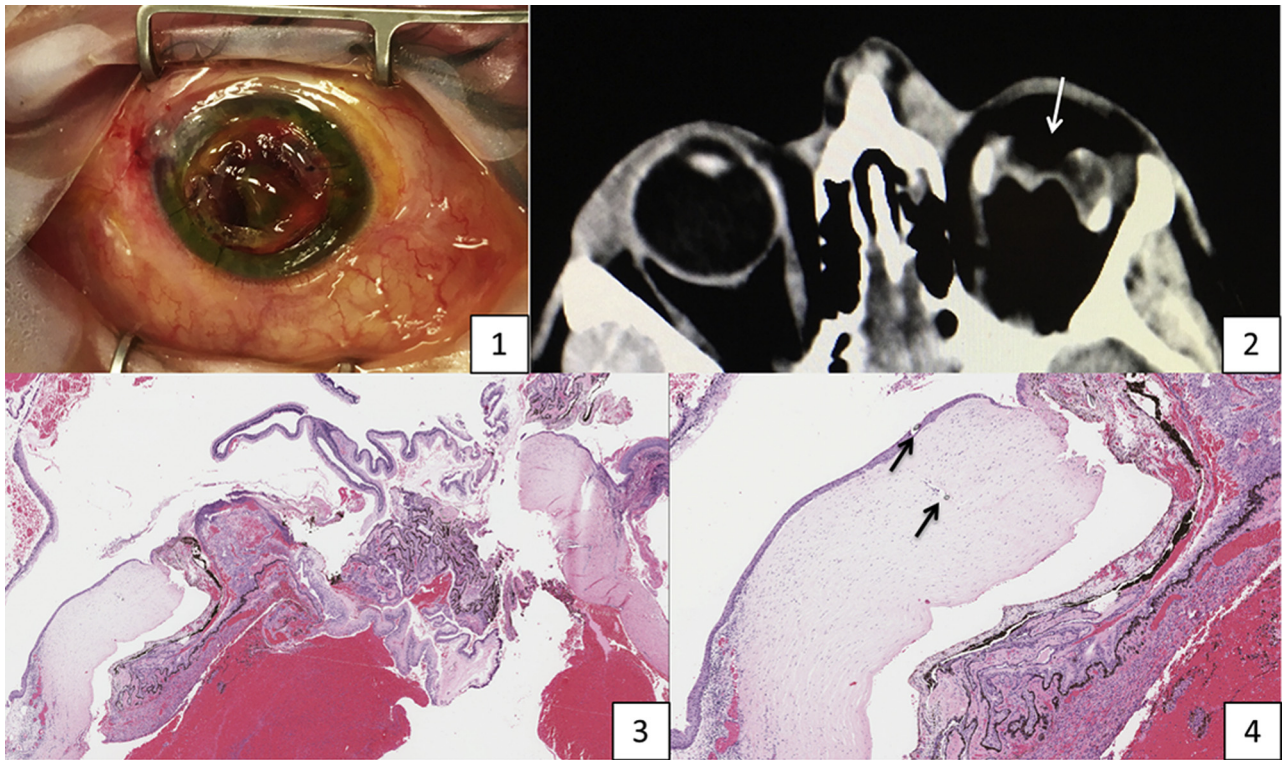
Abbreviations and Acronyms:

CLS = contact lens sensor; **GAT** = Goldmann applanation tonometry; **IOP** = intraocular pressure; **MD** = mean deviation; **mITT** = modified intent-to-treat; **PLS** = partial least squares.

Correspondence:

Carlos Gustavo De Moraes, MD, MPH, Edward S. Harkness Eye Institute, Columbia University Medical Center, 635 West 165th Street, Box 69, New York, NY 10032. E-mail: cvd2109@columbia.edu.

Pictures & Perspectives



Traumatic Loss of a Healed Corneal Button

A 30-year-old man with a 14-year history of a prior penetrating keratoplasty (PKP) presented with an open globe following a motor vehicle collision (Fig 1). Complete dehiscence of his corneal graft at the graft host junction was observed with uveal tissue protrusion. Computed tomography imaging (Fig 2, arrow) demonstrated the absence of the corneal graft. An attempt to close the globe was followed by an enucleation (Fig 3). Histopathology (H&E) confirmed the absence of the corneal graft and revealed suture material (Fig 4, arrow) in the host cornea and prolapsed uveal tissue. The incidence of traumatic globe rupture is approximately 2.0% following PKP.

JENNIFER C. LARSON, MD

MEISHA L. RAVEN, DO

HEATHER D. POTTER, MD

University of Wisconsin—Madison, Department of Ophthalmology, Madison, Wisconsin