

<sup>25</sup> Department of Ophthalmology, Ocular Oncology Unit, Valladolid University Hospital, Valladolid, Spain.

#### Financial Disclosure(s):

The author(s) have made the following disclosure(s): I.G.R.: Consultant – Oraya Therapeutics Inc.; Moorfields Eye Hospital NHS Foundation Trust, London, United Kingdom; Lecturer – Allergan; British Medical Association.

R.T.A.: Grant – The Finnish Eye Foundation, Eye and Tissue Bank Foundation, Evald and Hilda Nissi Foundation, Mary and Georg C. Ehrnrooth Foundation (Helsinki, Finland), and Emil Aaltonen Foundation (Tampere, Finland).

E.B.: Board member and lecturer – Novartis.

N.B.: Board member and lecturer – Novartis.

T.T.K.: Grant – Helsinki University Central Hospital Research Fund and Sigrid Jusélius Foundation (Helsinki, Finland).

Supported by the Finnish Eye Foundation (R.T.A.); the Eye and Tissue Bank Foundation (R.T.A.); the Evald and Hilda Nissi Foundation (R.T.A.); the Mary and Georg C. Ehrnrooth Foundation (R.T.A.); the Emil Aaltonen Foundation, Finland (R.T.A.); Helsinki University Central Hospital Research Fund (grant no.: TYH2013316 [T.T.K.]); the Sigrid Jusélius Foundation, Helsinki, Finland (T.T.K.); and Fight for Sight, Copenhagen, Denmark (J.K.). The funding organizations had no role in the design or conduct of this research.

#### Author Contributions:

Conception and design: Al-Jamal, Cassoux, Desjardins, Kivelä

Analysis and interpretation: Al-Jamal, Cassoux, Desjardins, Damato, Konstantinidis, Coupland, Heimann, Petrovic, Pe'er, Salvi, Rennie, Rospond-Kubiak, Kociecki, Folke Kiilgaard, Heegaard, Cohen, Kilic, Blasi, Saornil, Kivelä, Sagoo, Amiryman, Saakyan, Eide, Krohn, Midena, Parrozzani, Grange, Schalenbourg

Data collection: Al-Jamal, Cassoux, Desjardins, Damato, Konstantinidis, Coupland, Heimann, Petrovic, Zografos, Velazquez-Martin, Krema, Bogdali, Markiewicz, Romanowska-Dixon, Metz, Biewald, Bornfeld, Kiratli, Bronkhorst, Jager, Marinkovic, Fili, Seregard, Frenkel, Pe'er, Salvi, Rennie, Rospond-Kubiak, Kociecki, Folke Kiilgaard, Heegaard, Cohen, Kilic, Blasi, Saornil, Kivelä, Sagoo, Amiryman, Saakyan, Eide, Krohn, Midena, Parrozzani, Grange, Schalenbourg

Obtained funding: Al-Jamal, Kiilgaard, Kivelä

Overall responsibility: Al-Jamal, Cassoux, Desjardins, Damato, Konstantinidis, Coupland, Heimann, Petrovic, Zografos, Velazquez-Martin, Krema, Bogdali, Markiewicz, Romanowska-Dixon, Metz, Biewald, Bornfeld, Kiratli, Bronkhorst, Jager, Marinkovic, Fili, Seregard, Frenkel, Pe'er, Salvi, Rennie, Rospond-Kubiak, Kociecki, Folke Kiilgaard, Heegaard, Cohen, Kilic, Blasi, Saornil, Kivelä, Sagoo, Amiryman, Saakyan, Eide, Krohn, Midena, Parrozzani, Grange, Schalenbourg

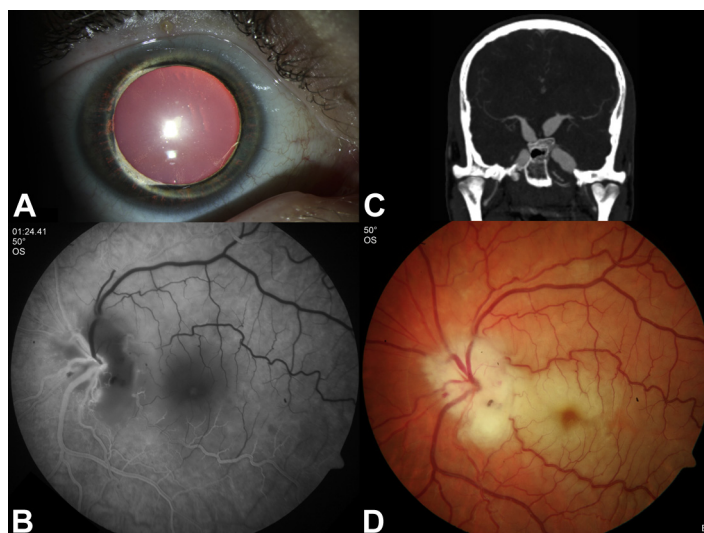
#### Abbreviations and Acronyms:

**CBI** = ciliary body involvement; **CCBM** = choroidal and ciliary body melanoma; **CI** = confidence interval; **HR** = hazard rate; **TNM** = tumor-node-metastasis; **UM** = uveal melanoma.

#### Correspondence:

Rana'a T. Al-Jamal, MD, PhD, Department of Ophthalmology, Helsinki University Hospital, PL 220, Haartmaninkatu 4 C, FI-00029 HUS, Helsinki, Finland. E-mail: [ranaa.aljamal@hus.fi](mailto:ranaa.aljamal@hus.fi).

## Pictures & Perspectives



### Central Retinal Artery Occlusion in a Teenager

A 17-year-old boy presented with recurrent headache for several weeks and sudden vision loss on the left eye to light perception. On slit lamp examination partial aniridia with transillumination was identified (Fig 1A). Ophthalmoscopy and angiography of the left eye revealed a central retinal artery occlusion (Fig 1B, D). Computed tomography of the cardiovascular and cerebrovascular system discovered ectasia of all major arterial vessels, including carotid and cerebral arteries (Fig 1C). Genetic analysis revealed a missense mutation of the ACTA2 gene, encoding for a smooth muscle isoform of  $\alpha$ -actin. Despite anticoagulant treatment, the vision of the patient remained at light perception.

MATTHIAS FUEST, MD

YASSIN DJALALI-TALAB, MD

PETER WALTER, MD

Department of Ophthalmology, RWTH Aachen University, Aachen, Germany