

³ Cole Eye Institute, Cleveland Clinic, Cleveland, Ohio.

*A listing of the [Comparison of Age-Related Macular Degeneration Treatments Trials Research Group](#) is available at www.aojournal.org.

Financial Disclosure(s):

The author(s) have no proprietary or commercial interest in any materials discussed in this article.

Supported by the National Eye Institute, National Institutes of Health, Bethesda, Maryland (cooperative agreement nos.: U10 EY017823, U10 EY017825, U10 EY017826, U10 EY017828, and R21EY023689).

Author Contributions:

Conception and design: Ying, Maguire, Daniel, Grunwald, Martin

Analysis and interpretation: Ying, Maguire, Daniel, Grunwald, Ahmed

Data collection: Ying, Maguire, Daniel, Grunwald, Ahmed, Martin

Obtained funding: Ying, Maguire, Grunwald, Martin

Overall responsibility: Ying, Maguire, Daniel, Grunwald, Ahmed, Martin

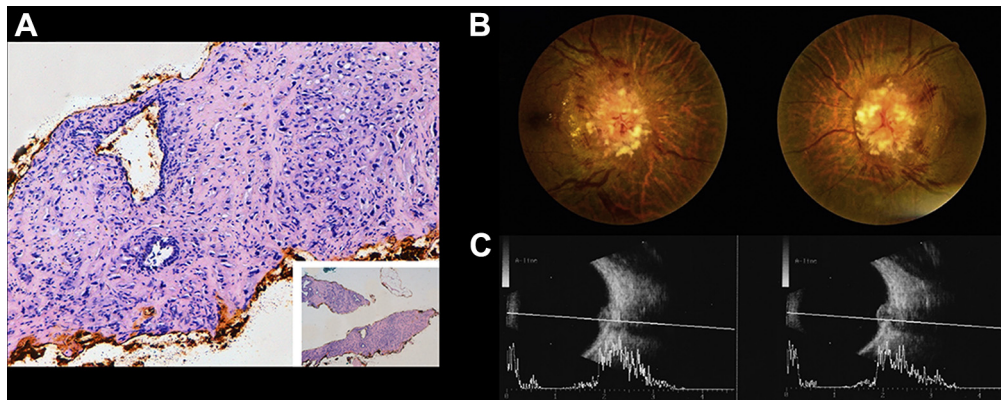
Abbreviations and Acronyms:

AMD = age-related macular degeneration; **CATT** = Comparison of Age-Related Macular Degeneration Treatments Trials; **CI** = confidence interval; **CNV** = choroidal neovascularization; **CVD** = cardiovascular disease; **DA** = disc area; **OR** = odds ratio; **PRN** = pro re nata.

Correspondence:

Gui-shuang Ying, PhD, Perelman School of Medicine, University of Pennsylvania, 3535 Market Street, Suite 700, Philadelphia, PA 19104. E-mail: gsying@mail.med.upenn.edu.

Pictures & Perspectives



Bilateral Optic Nerve Metastases

A 52-year-old man presented with worsening vision in both eyes. Five years previously, prostate adenocarcinoma (Fig 1A) was diagnosed and multiple metastases had been identified, including in the skull. Best-corrected visual acuity was 20/200 in the right eye and 20/25 in the left eye. Ophthalmoscopy (Fig 1B) and ultrasonography (Fig 1C) showed elevation of each optic nerve head. Electroretinography was normal and visual evoked potential responses of very low amplitude suggested an afferent defect compatible with bilateral optic neuropathy. Magnetic resonance imaging confirmed optic nerve and orbital metastatic involvement.

DAVID CORDEIRO SOUSA, MD

INÉS LEAL, MD

Ophthalmology Department, Hospital Santa Maria - Lisbon Academic Medical Center, Av Prof Egas Moniz, Lisboa, Portugal
